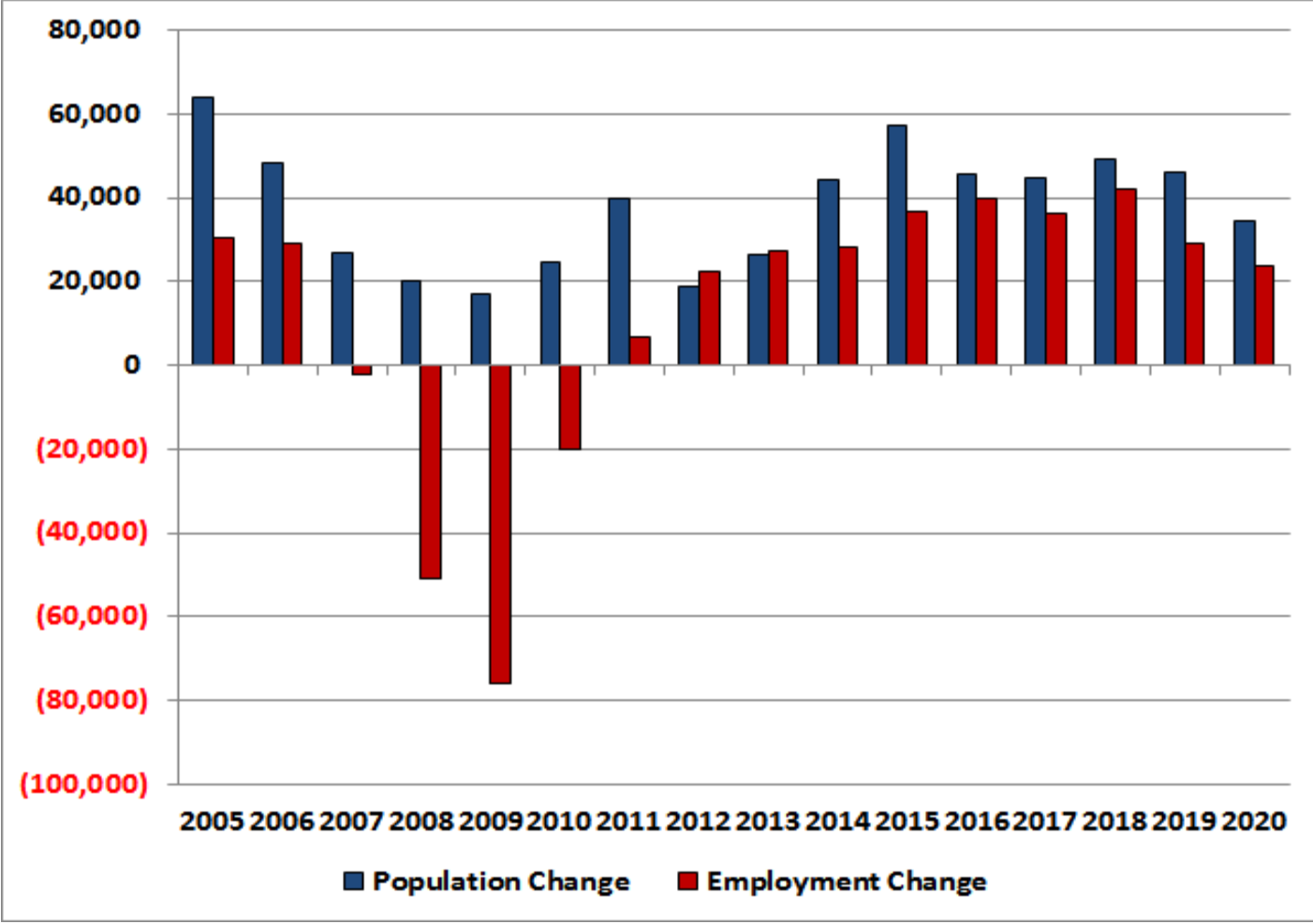


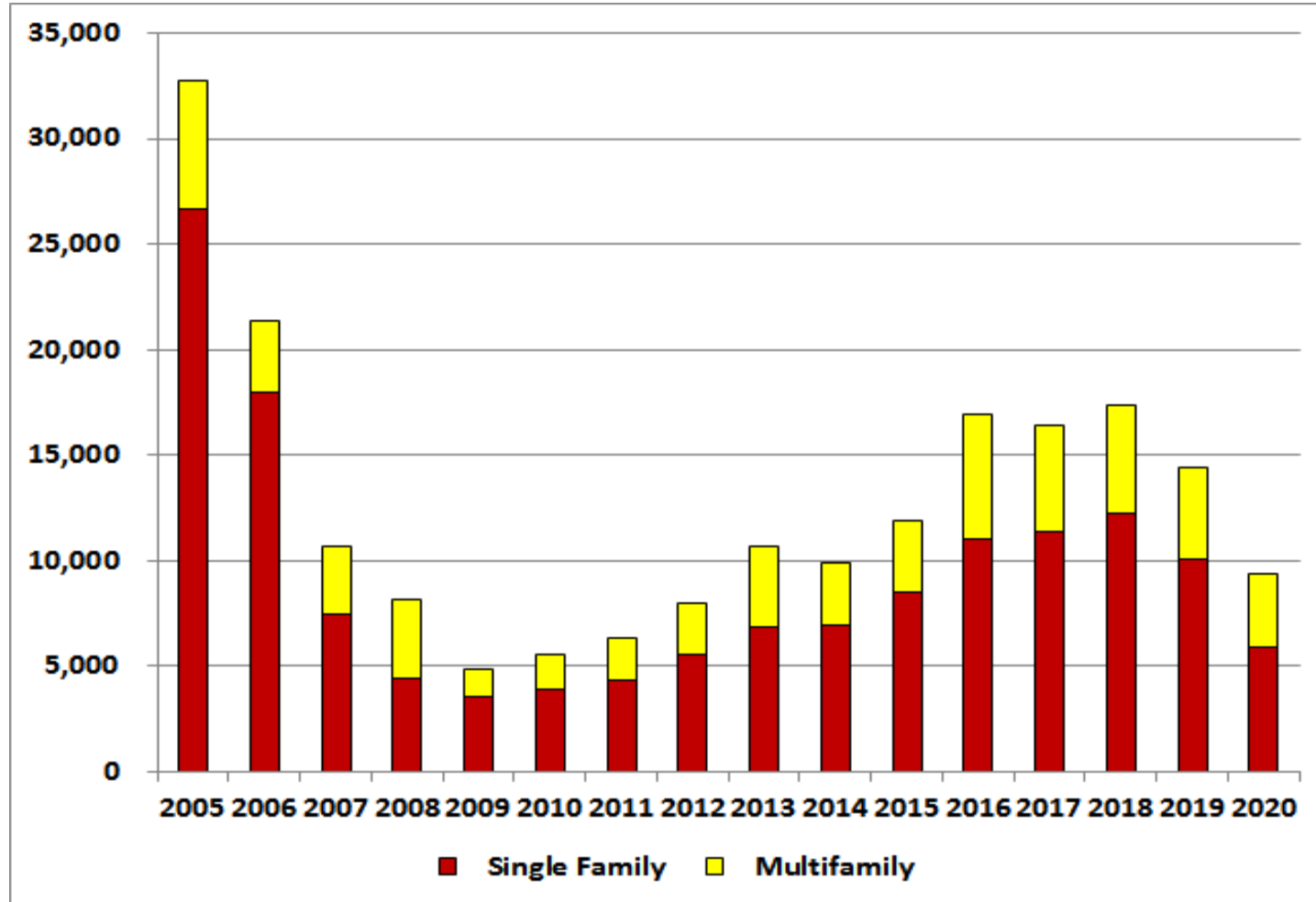
# Tampa-St. Petersburg-Clearwater MSA ECONOCAST

	<u>2014</u>	<u>2015</u>	<u>2016</u>	<u>2017</u>	<u>2018</u>	<u>2019</u>	<u>2020</u>
Population	2,917,818	2,975,225	3,020,634	3,065,399	3,114,608	3,160,749	3,195,087
Population Change	44,328	57,407	45,409	44,765	49,210	46,141	34,337
Employment	1,159,301	1,195,824	1,235,589	1,271,798	1,313,945	1,342,867	1,366,544
Employment Change	28,007	36,524	39,765	36,209	42,147	28,922	23,678
Per Capita Income	40,893	42,540	42,479	43,425	44,479	45,485	46,418
Unemployment Rate	5.9	5.1	3.4	2.9	2.9	4.5	6.5
Total Housing Starts	9,894	11,899	16,918	16,420	17,352	14,368	9,385
Single Family	6,937	8,507	11,064	11,409	12,264	10,096	5,874
Multifamily	2,957	3,392	5,854	5,011	5,088	4,271	3,511
New Single-Family Closings	5,436	7,011	7,949	9,583	9,365	9,204	8,605
New Single-Family Price	273,530	285,530	287,090	264,413	253,990	244,889	239,480
Existing Single-Family Closings	47,020	52,633	51,321	48,402	43,586	43,715	42,977
Existing Single-Family Price	186,263	194,463	197,854	182,066	176,650	171,656	171,569
New Condominium Closings	887	621	942	2,692	4,071	4,363	4,607
New Condominium Price	279,832	323,997	307,844	333,776	312,405	288,455	279,186
Existing Condominium Closings	13,399	16,421	17,722	15,353	13,685	13,533	13,432
Existing Condominium Price	148,691	157,538	150,637	141,886	143,985	142,114	143,432
Foreclosures	11,265	8,488	8,475	10,630	8,985	6,728	5,783
Commercial Construction (Sq. Ft.)	7,287,019	8,371,883	10,212,803	15,318,446	15,173,427	14,435,120	10,638,735
Local Retail	964,236	1,197,624	1,466,330	2,236,025	2,209,435	2,106,483	1,548,352
Regional Retail	832,079	806,206	973,908	1,305,124	1,416,154	1,385,245	961,310
Office	858,536	766,482	939,004	1,400,629	1,423,517	1,372,796	987,163
Industrial	118,580	631,322	808,693	1,482,435	1,390,135	1,330,182	991,025
Warehouse	2,192,242	1,321,159	1,608,102	2,337,753	2,390,301	2,302,151	1,653,123
Hotel	405,149	319,904	390,325	610,041	570,193	527,668	410,851
Hospital	453,444	12,644	16,500	14,566	21,116	20,045	17,126
Inst./Govt.	1,462,753	3,316,542	4,009,941	5,931,873	5,752,577	5,390,549	4,069,784

# Tampa-St. Petersburg-Clearwater MSA GROWTH IN POPULATION & EMPLOYMENT



# Tampa-St. Petersburg-Clearwater MSA HOUSING STARTS



# Tampa-St. Petersburg-Clearwater MSA COMMERCIAL CONSTRUCTION

