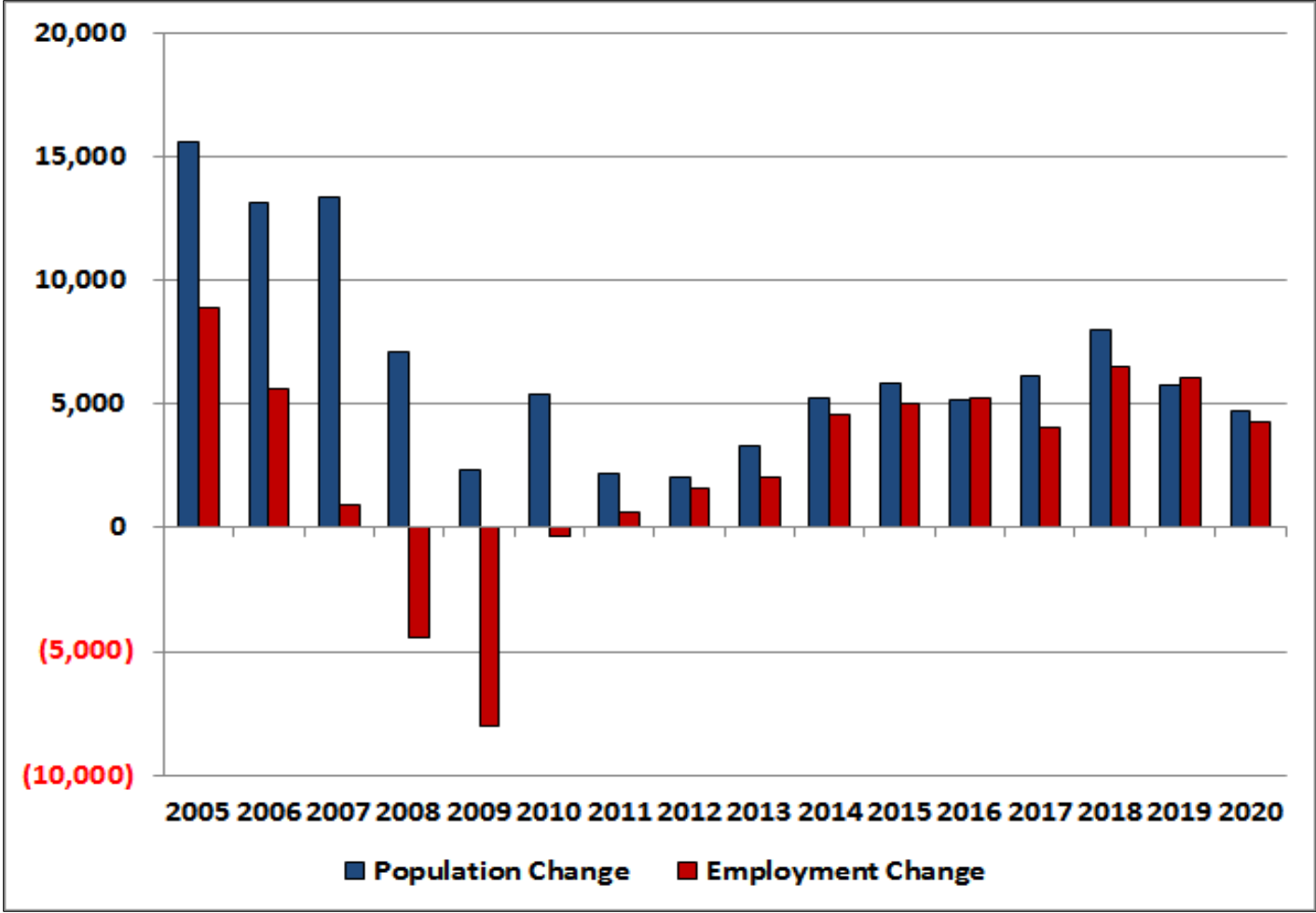


Port St. Lucie MSA ECONOCAST

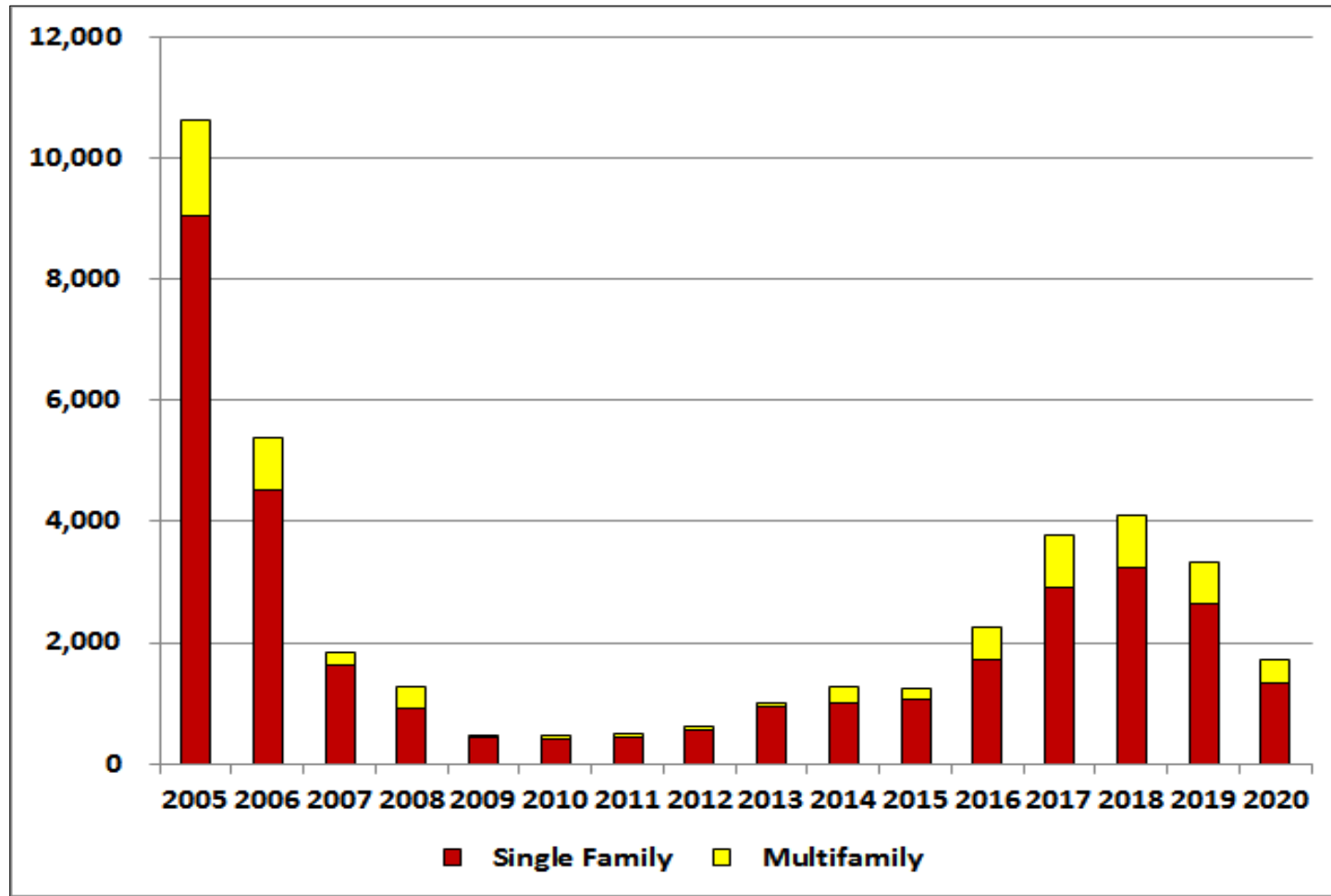
	<u>2014</u>	<u>2015</u>	<u>2016</u>	<u>2017</u>	<u>2018</u>	<u>2019</u>	<u>2020</u>
Population	437,995	443,846	449,006	455,154	463,192	468,943	473,698
Population Change	5,222	5,851	5,160	6,149	8,037	5,751	4,755
Employment	127,718	132,720	137,989	142,065	148,561	154,655	158,949
Employment Change	4,581	5,003	5,268	4,077	6,496	6,095	4,293
Per Capita Income	46,103	47,626	45,879	46,927	47,768	48,772	48,942
Unemployment Rate	7.1	5.8	4.4	3.5	3.6	4.6	6.1
Total Housing Starts	1,271	1,247	2,269	3,781	4,113	3,329	1,728
Single Family	1,003	1,048	1,713	2,923	3,245	2,651	1,318
Multifamily	268	199	556	858	868	677	410
New Single-Family Closings	689	903	1,146	2,088	2,685	3,021	3,125
New Single-Family Price	286,275	316,556	322,923	322,596	313,033	304,845	307,201
Existing Single-Family Closings	9,892	10,064	9,944	9,409	8,588	8,354	8,027
Existing Single-Family Price	196,235	230,804	229,519	205,278	204,461	203,852	208,447
New Condominium Closings	211	143	192	451	505	501	450
New Condominium Price	327,662	343,889	292,696	324,049	301,085	287,841	258,898
Existing Condominium Closings	2,246	2,432	2,394	2,043	1,860	1,819	1,746
Existing Condominium Price	143,135	163,371	155,335	149,327	153,019	153,590	157,969
Foreclosures	1,117	479	3,181	1,758	2,451	953	546
Commercial Construction (Sq. Ft.)	664,429	578,879	580,436	661,091	880,966	648,958	502,122
Local Retail	34,583	103,175	105,576	114,190	155,658	118,425	84,850
Regional Retail	34,635	58,943	59,796	66,124	89,258	66,981	49,608
Office	23,212	55,068	54,193	64,641	84,460	60,405	50,004
Industrial	132,121	57,375	55,143	69,611	88,843	61,220	54,987
Warehouse	0	158,794	159,594	180,706	241,421	178,502	136,922
Hotel	0	10,555	9,743	13,493	16,601	10,741	10,992
Hospital	0	0	0	0	0	0	0
Inst./Govt.	439,878	134,969	136,390	152,325	204,725	152,683	114,759

Port St. Lucie MSA

GROWTH IN POPULATION & EMPLOYMENT



Port St. Lucie MSA HOUSING STARTS



Port St. Lucie MSA COMMERCIAL CONSTRUCTION

