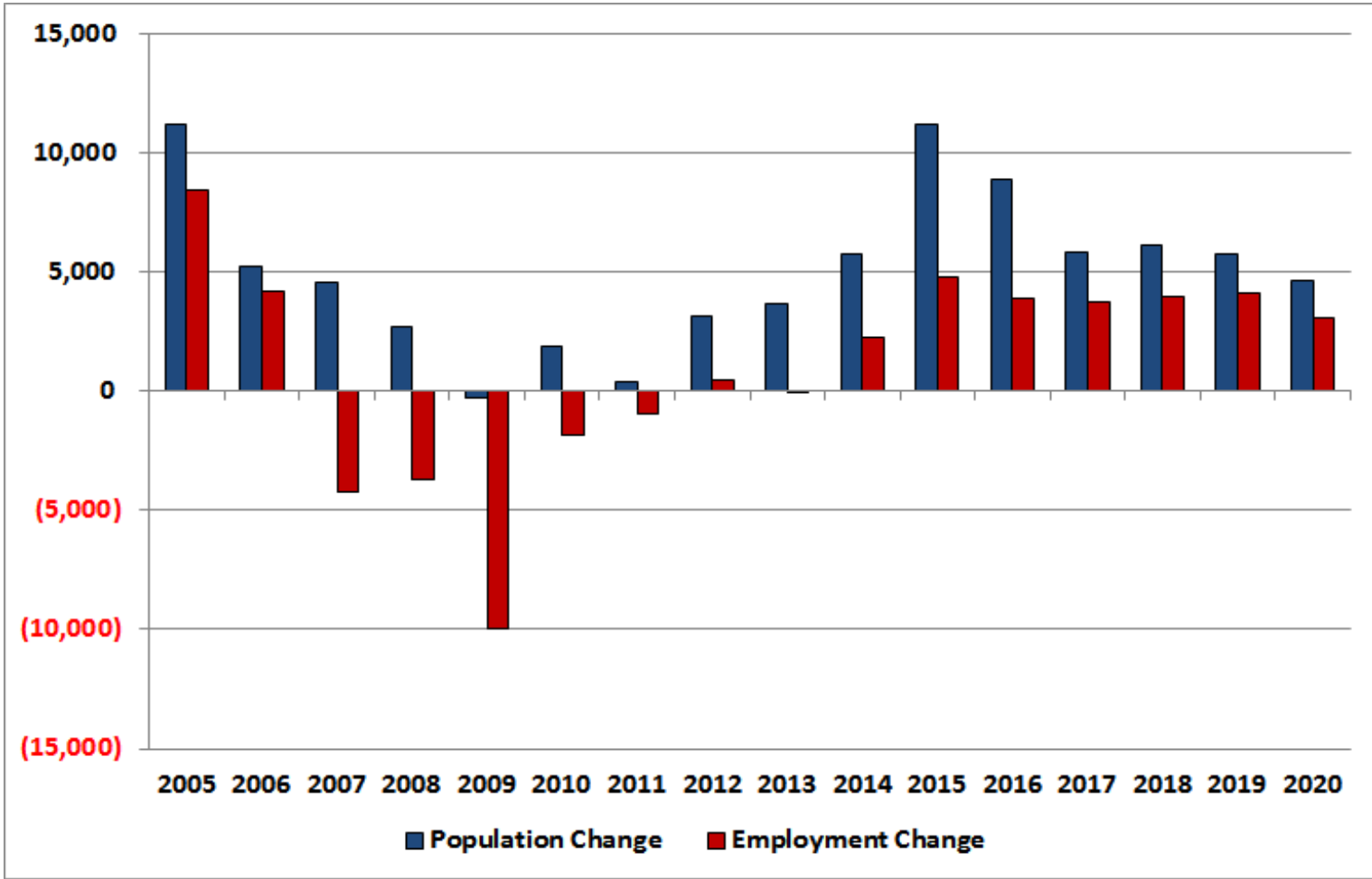


Palm Bay-Melbourne-Titusville MSA ECONOCAST

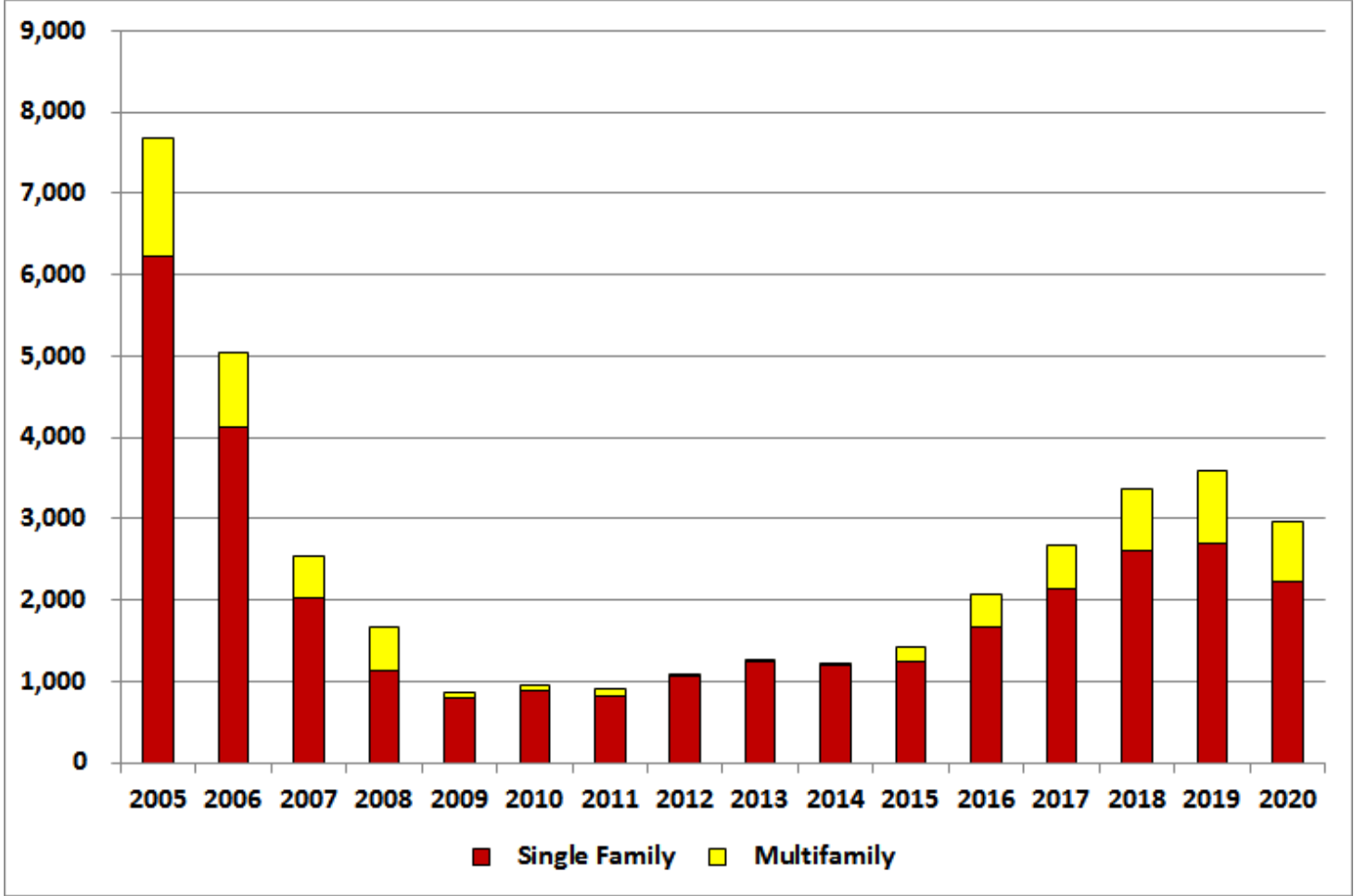
	<u>2014</u>	<u>2015</u>	<u>2016</u>	<u>2017</u>	<u>2018</u>	<u>2019</u>	<u>2020</u>
Population	556,902	568,088	576,978	582,810	588,918	594,678	599,327
Population Change	5,754	11,186	8,890	5,832	6,109	5,760	4,648
Employment	189,748	194,526	198,432	202,203	206,158	210,245	213,282
Employment Change	2,252	4,778	3,906	3,771	3,955	4,087	3,037
Per Capita Income	38,776	40,070	36,583	36,511	37,813	39,181	40,574
Unemployment Rate	7.0	5.9	3.6	3.6	3.5	5.0	7.0
Total Housing Starts	1,225	1,425	2,076	2,668	3,359	3,583	2,952
Single Family	1,195	1,238	1,656	2,139	2,600	2,699	2,226
Multifamily	30	187	420	529	760	884	726
New Single-Family Closings	781	1,056	1,429	2,394	3,261	4,092	4,392
New Single-Family Price	230,824	243,208	272,883	248,143	257,732	255,070	258,027
Existing Single-Family Closings	10,091	11,583	11,911	10,484	9,480	9,141	9,041
Existing Single-Family Price	166,283	186,954	204,916	190,104	185,343	181,532	182,384
New Condominium Closings	272	232	276	862	917	809	630
New Condominium Price	229,547	239,778	280,285	262,216	241,657	234,852	232,507
Existing Condominium Closings	2,839	3,459	3,336	2,947	2,555	2,432	2,286
Existing Condominium Price	153,495	160,166	166,803	157,802	158,258	158,398	162,210
Foreclosures	2,107	739	1,931	1,549	1,218	725	1,124
Commercial Construction (Sq. Ft.)	1,092,344	1,287,150	1,331,681	873,665	915,083	862,868	696,353
Local Retail	98,164	158,688	160,140	105,062	110,042	103,763	83,739
Regional Retail	210,793	330,873	333,900	219,059	229,444	216,352	174,601
Office	127,120	150,713	152,092	99,781	104,512	98,548	79,531
Industrial	0	68,840	69,469	45,576	47,737	45,013	36,326
Warehouse	248,610	284,005	286,603	188,029	196,943	185,706	149,868
Hotel	0	34,357	34,671	22,747	23,825	22,465	18,130
Hospital	0	0	0	0	0	0	0
Inst./Govt.	407,657	259,674	294,806	193,411	202,580	191,021	154,158

Palm Bay-Melbourne-Titusville MSA

GROWTH IN POPULATION & EMPLOYMENT



Palm Bay-Melbourne-Titusville MSA HOUSING STARTS



Palm Bay-Melbourne-Titusville MSA COMMERCIAL CONSTRUCTION

