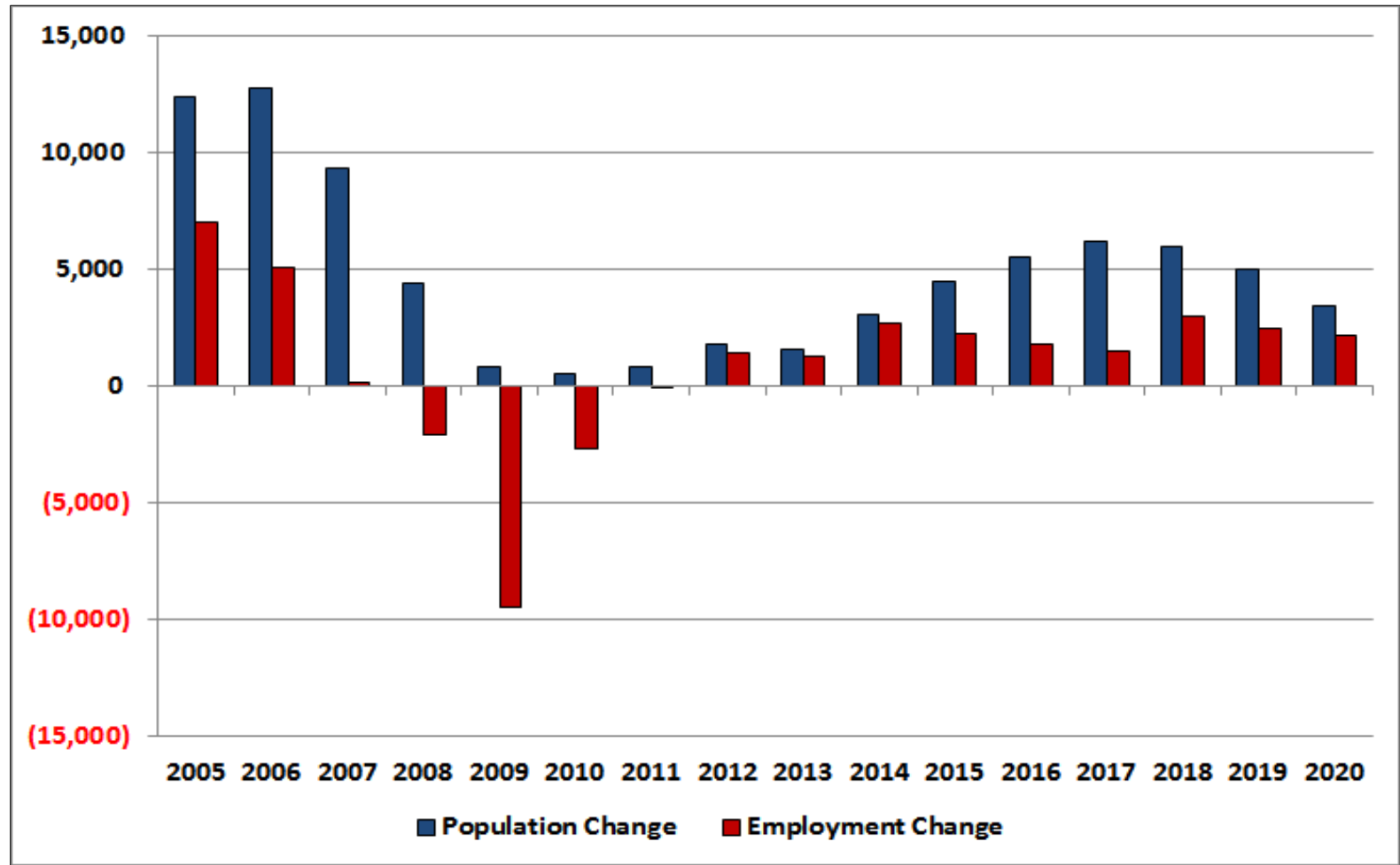


Ocala MSA ECONOCAST

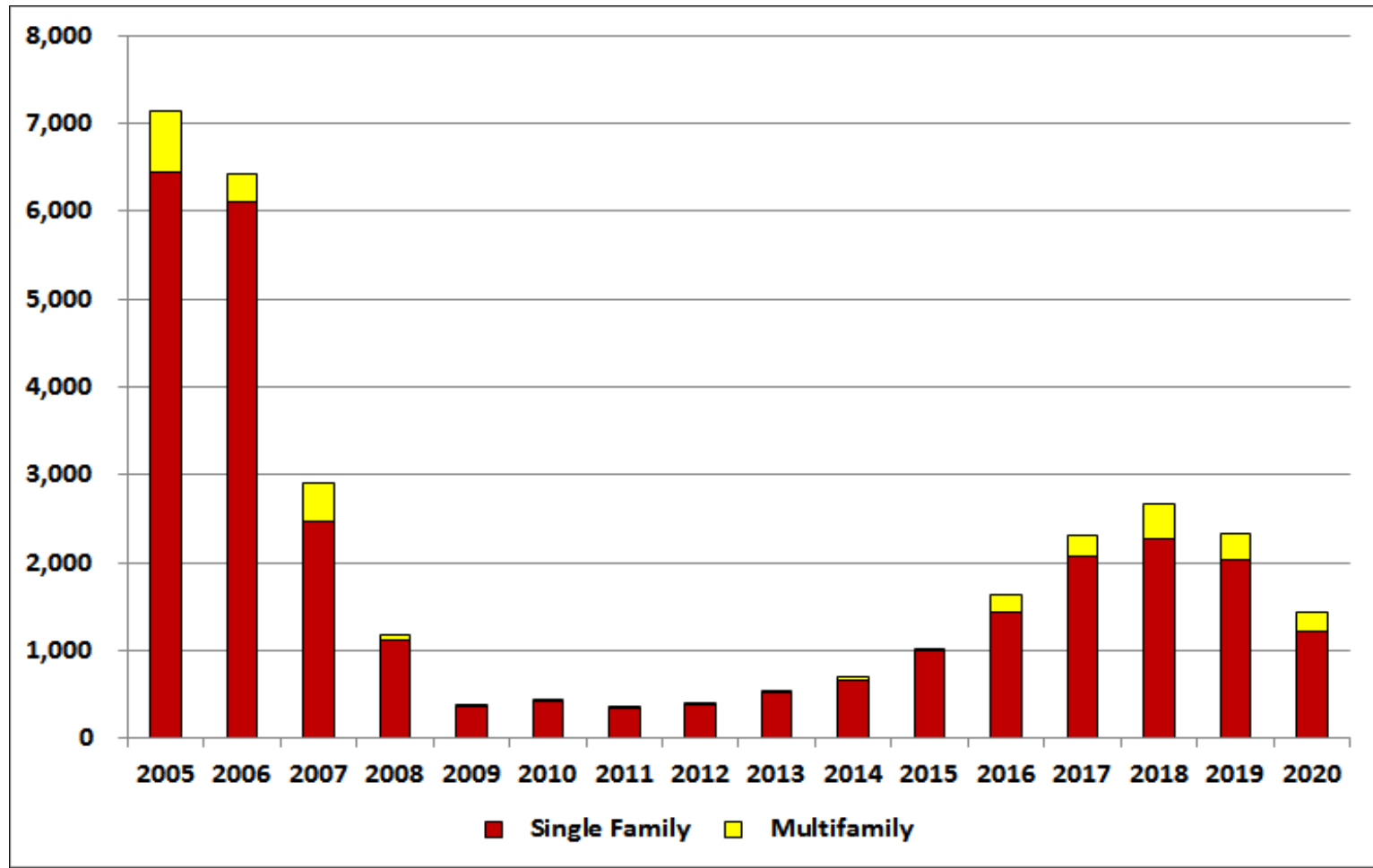
	<u>2014</u>	<u>2015</u>	<u>2016</u>	<u>2017</u>	<u>2018</u>	<u>2019</u>	<u>2020</u>
Population	338,749	343,254	348,736	354,888	360,848	365,863	369,257
Population Change	3,061	4,505	5,482	6,152	5,961	5,015	3,394
Employment	94,511	96,719	98,501	99,982	102,979	105,434	107,621
Employment Change	2,712	2,207	1,782	1,481	2,997	2,455	2,187
Per Capita Income	32,349	33,432	33,424	33,596	34,684	35,790	36,414
Unemployment Rate	7.3	6.4	5.3	4.2	4.3	5.7	8.1
Total Housing Starts	695	1,007	1,634	2,314	2,677	2,331	1,432
Single Family	657	1,004	1,442	2,069	2,276	2,025	1,229
Multifamily	38	3	192	245	402	306	203
New Single-Family Closings	445	557	910	1,956	2,772	3,447	3,688
New Single-Family Price	202,795	227,841	217,053	217,900	210,194	206,805	206,132
Existing Single-Family Closings	6,179	6,405	6,696	6,305	5,633	5,352	4,955
Existing Single-Family Price	133,955	137,299	152,757	152,446	150,619	150,419	154,196
New Condominium Closings	24	10	17	25	23	23	19
New Condominium Price	209,629	175,000	207,362	217,694	204,353	203,846	213,694
Existing Condominium Closings	482	480	594	506	417	395	373
Existing Condominium Price	66,219	68,007	73,976	73,023	78,663	80,699	84,939
Foreclosures	1,324	954	1,794	1,929	2,061	1,202	962
Commercial Construction (Sq. Ft.)	345,968	507,510	617,553	693,019	671,506	564,956	382,363
Local Retail	172,669	55,229	67,204	75,417	73,075	61,480	41,610
Regional Retail	41,855	77,350	94,122	105,624	102,345	86,106	58,276
Office	46,721	64,006	77,885	87,403	84,689	71,251	48,223
Industrial	304	41,151	50,073	56,192	54,448	45,809	31,003
Warehouse	54,180	145,788	177,399	199,078	192,898	162,290	109,838
Hotel	0	7,672	9,335	10,476	10,151	8,540	5,780
Hospital	0	0	0	0	0	0	0
Inst./Govt.	30,239	116,314	141,534	158,830	153,899	129,479	87,632

Ocala MSA

GROWTH IN POPULATION & EMPLOYMENT



Ocala MSA HOUSING STARTS



Ocala MSA COMMERCIAL CONSTRUCTION

