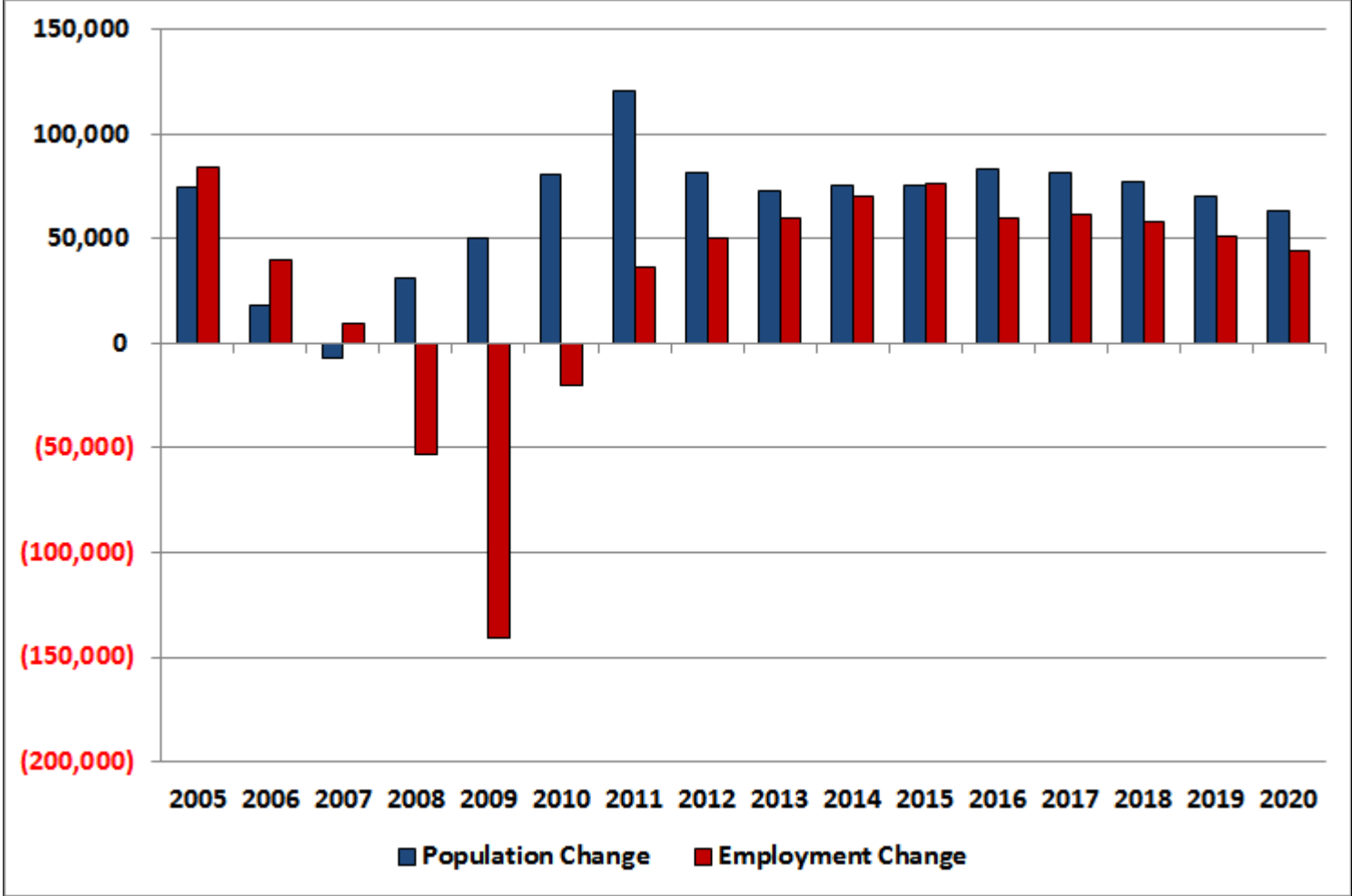


# Miami-Ft. Lauderdale-West Palm Bch MSA ECONOCAST

	<u>2014</u>	<u>2015</u>	<u>2016</u>	<u>2017</u>	<u>2018</u>	<u>2019</u>	<u>2020</u>
Population	5,937,100	6,012,340	6,096,093	6,178,040	6,255,122	6,325,523	6,389,161
Population Change	75,760	75,240	83,753	81,947	77,082	70,400	63,638
Employment	2,329,991	2,406,483	2,466,493	2,528,584	2,586,633	2,638,273	2,682,613
Employment Change	70,181	76,492	60,010	62,091	58,049	51,640	44,340
Per Capita Income	47,379	49,277	48,998	50,305	51,412	52,631	53,858
Unemployment Rate	6.4	5.5	4.6	4.4	4.4	5.5	7.2
Total Housing Starts	12,713	16,102	16,392	21,869	26,042	21,279	12,325
Single Family	5,613	6,609	7,985	12,717	15,429	12,739	6,485
Multifamily	7,100	9,493	8,406	9,153	10,613	8,539	5,840
New Single-Family Closings	3,193	4,021	5,266	14,547	22,204	28,755	31,148
New Single-Family Price	477,859	560,385	543,706	521,518	494,676	471,458	456,994
Existing Single-Family Closings	61,835	66,790	67,966	74,119	74,438	78,505	78,759
Existing Single-Family Price	362,679	369,057	393,330	376,981	373,118	369,343	373,818
New Condominium Closings	3,285	2,648	3,155	6,502	9,697	11,307	13,041
New Condominium Price	489,610	557,621	528,073	514,485	496,226	455,984	426,901
Existing Condominium Closings	62,256	62,814	59,305	58,546	55,493	55,002	52,915
Existing Condominium Price	236,511	248,832	261,877	258,484	255,926	250,186	248,994
Foreclosures	19,515	13,765	15,080	13,624	12,839	12,997	14,656
Commercial Construction (Sq. Ft.)	13,785,958	13,869,835	18,898,240	14,712,017	13,525,820	12,463,221	11,579,347
Local Retail	1,670,048	1,400,900	2,024,564	1,662,303	1,541,715	1,410,906	1,290,780
Regional Retail	4,181,721	2,009,241	2,794,697	2,404,709	2,199,185	2,011,252	1,854,872
Office	426,666	1,952,645	2,793,523	2,261,617	2,069,887	1,916,964	1,798,886
Industrial	1,073,492	583,758	818,391	660,601	593,614	556,918	537,971
Warehouse	3,096,806	2,608,905	3,873,141	3,037,561	2,834,015	2,609,538	2,399,695
Hotel	534,900	1,069,662	1,539,662	1,198,364	1,086,450	1,021,537	984,361
Hospital	21,768	138,654	231,056	163,815	162,308	146,990	126,850
Inst./Govt.	2,780,557	4,106,069	4,823,205	3,323,047	3,038,645	2,789,115	2,585,932

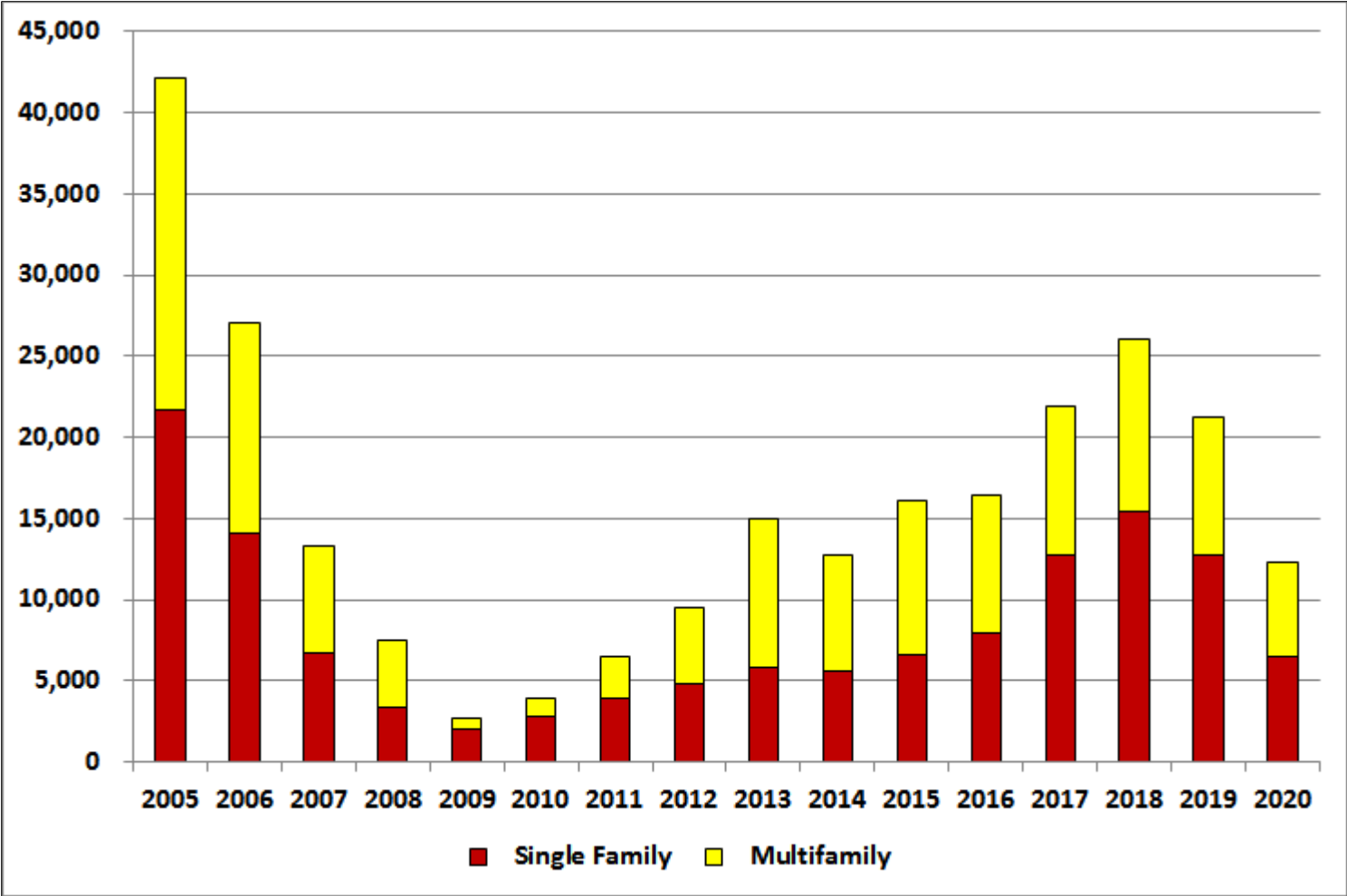
# Miami-Ft. Lauderdale-West Palm Bch MSA

## GROWTH IN POPULATION & EMPLOYMENT



# Miami-Ft. Lauderdale-West Palm Bch MSA

## HOUSING STARTS



# Miami-Ft. Lauderdale-West Palm Bch MSA COMMERCIAL CONSTRUCTION

