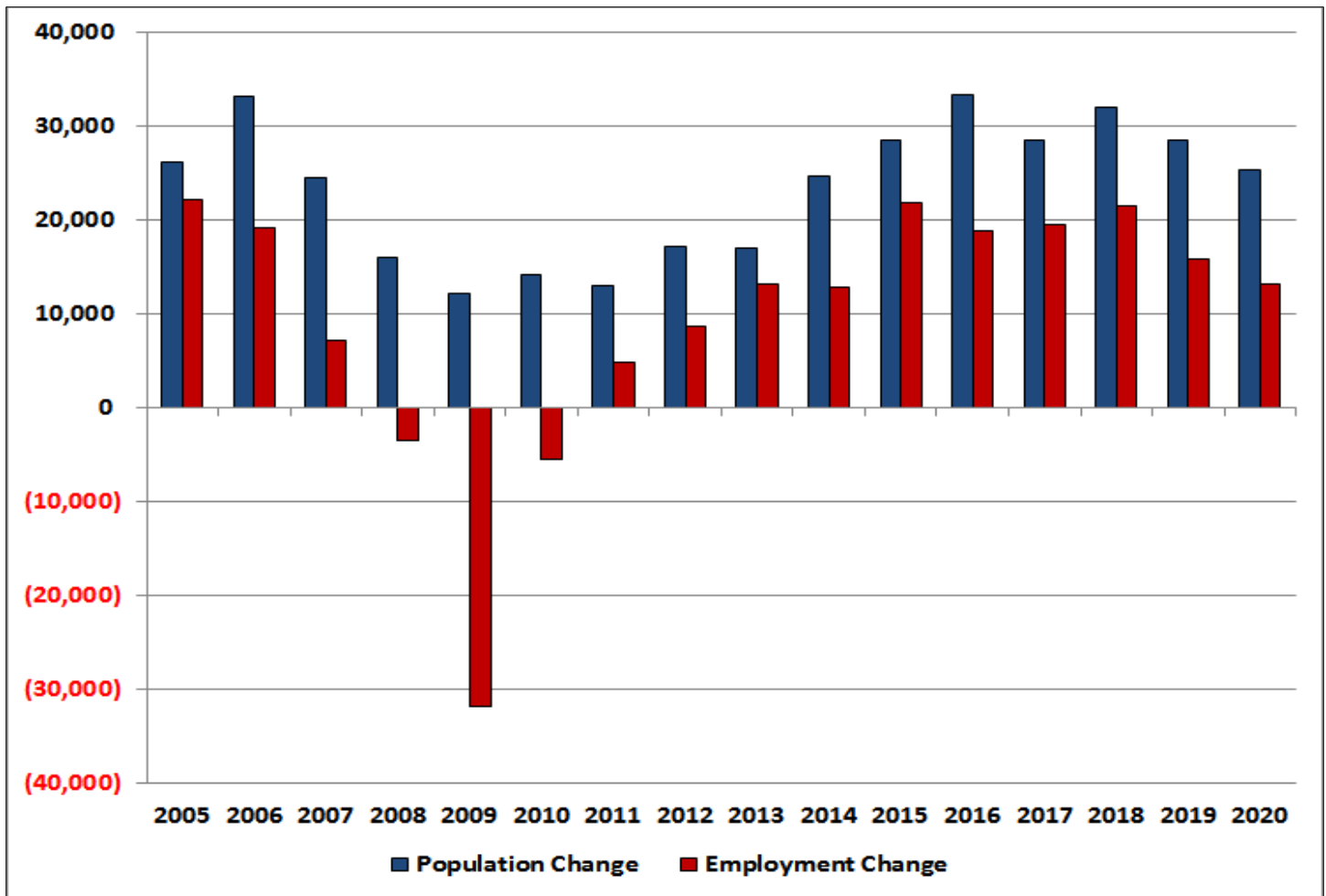


# Jacksonville MSA ECONOCAST

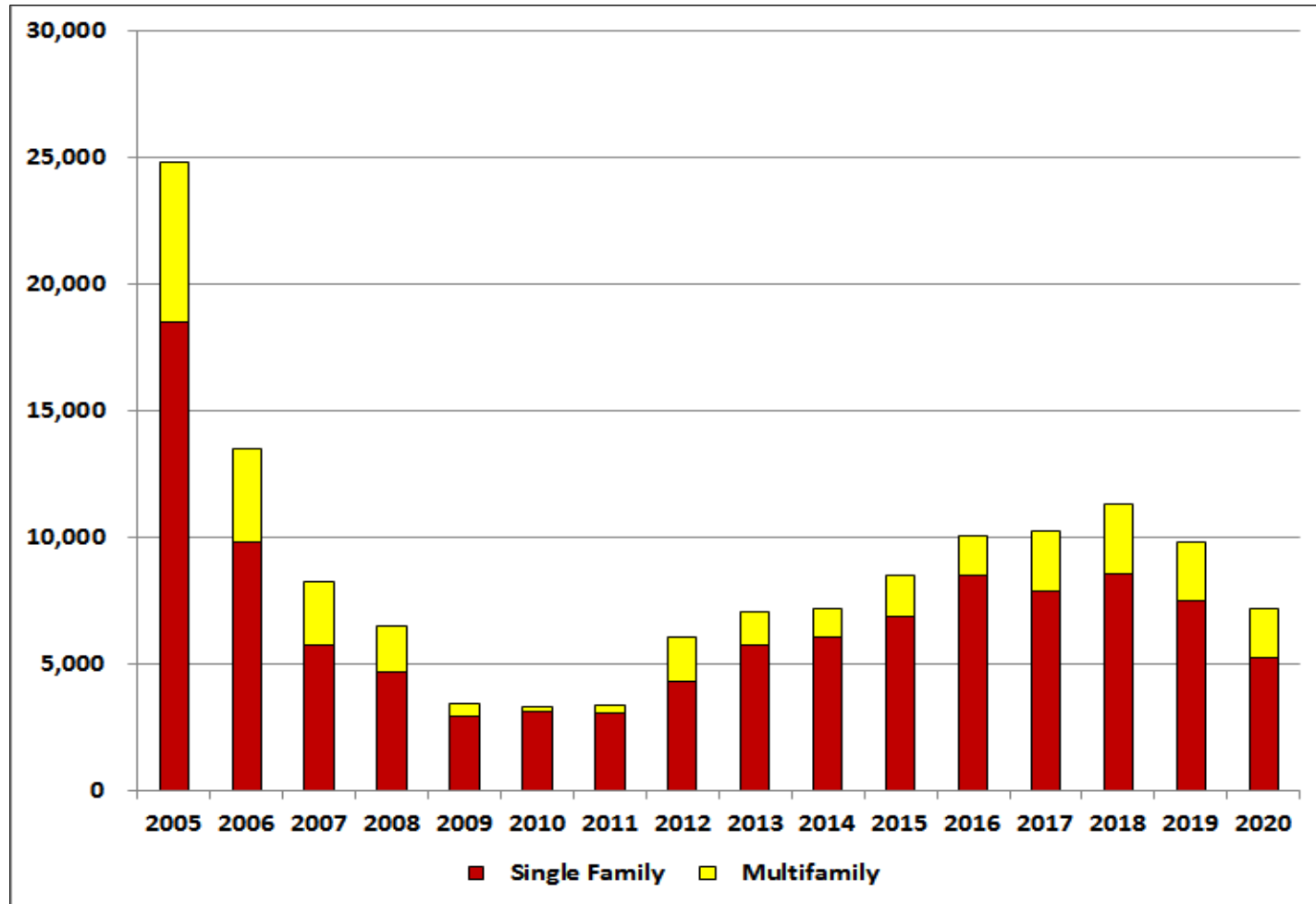
	<u>2014</u>	<u>2015</u>	<u>2016</u>	<u>2017</u>	<u>2018</u>	<u>2019</u>	<u>2020</u>
Population	1,421,004	1,449,481	1,482,841	1,511,423	1,543,360	1,571,906	1,597,266
Population Change	24,737	28,477	33,360	28,582	31,937	28,546	25,361
Employment	592,545	614,435	633,224	652,773	674,327	690,157	703,358
Employment Change	12,800	21,889	18,790	19,548	21,555	15,829	13,202
Per Capita Income	42,302	43,738	44,135	44,647	46,184	47,484	48,190
Unemployment Rate	6.4	5.4	3.9	3.1	3.1	4.7	6.7
Total Housing Starts	7,160	8,522	10,059	10,227	11,336	9,828	7,198
Single Family	6,056	6,873	8,523	7,897	8,533	7,481	5,251
Multifamily	1,104	1,649	1,536	2,330	2,802	2,347	1,947
New Single-Family Closings	4,553	5,255	5,976	6,286	6,573	6,537	6,569
New Single-Family Price	266,645	292,964	302,537	302,342	296,261	295,540	286,364
Existing Single-Family Closings	20,068	21,253	19,427	19,125	18,611	18,829	18,226
Existing Single-Family Price	203,422	214,911	235,139	223,911	218,116	217,272	209,693
New Condominium Closings	1,285	560	637	1,942	2,604	2,690	2,553
New Condominium Price	287,701	262,194	314,432	305,687	316,687	305,492	302,331
Existing Condominium Closings	3,316	4,547	4,373	3,243	2,761	2,578	2,421
Existing Condominium Price	170,830	167,357	172,454	182,029	191,741	197,296	198,220
Foreclosures	5,668	4,037	3,019	2,678	2,947	2,915	2,349
Commercial Construction (Sq. Ft.)	3,680,479	5,485,934	7,042,477	6,429,533	7,487,842	6,475,088	5,621,639
Local Retail	426,535	846,616	1,085,319	973,996	1,134,366	977,658	855,257
Regional Retail	489,862	648,793	838,910	762,549	881,094	768,268	668,242
Office	421,250	928,849	1,197,090	1,104,712	1,286,798	1,111,739	957,599
Industrial	130,394	303,201	351,582	330,578	371,286	335,180	302,861
Warehouse	1,015,473	1,381,390	1,839,720	1,684,599	2,001,497	1,701,958	1,448,909
Hotel	211,989	269,168	334,652	304,916	354,308	308,741	273,028
Hospital	205,670	96,801	134,743	122,898	149,264	124,813	104,392
Inst./Govt.	779,306	1,011,116	1,260,460	1,145,284	1,309,229	1,146,731	1,011,352

# Jacksonville MSA

## GROWTH IN POPULATION & EMPLOYMENT



# Jacksonville MSA HOUSING STARTS



# Jacksonville MSA COMMERCIAL CONSTRUCTION

