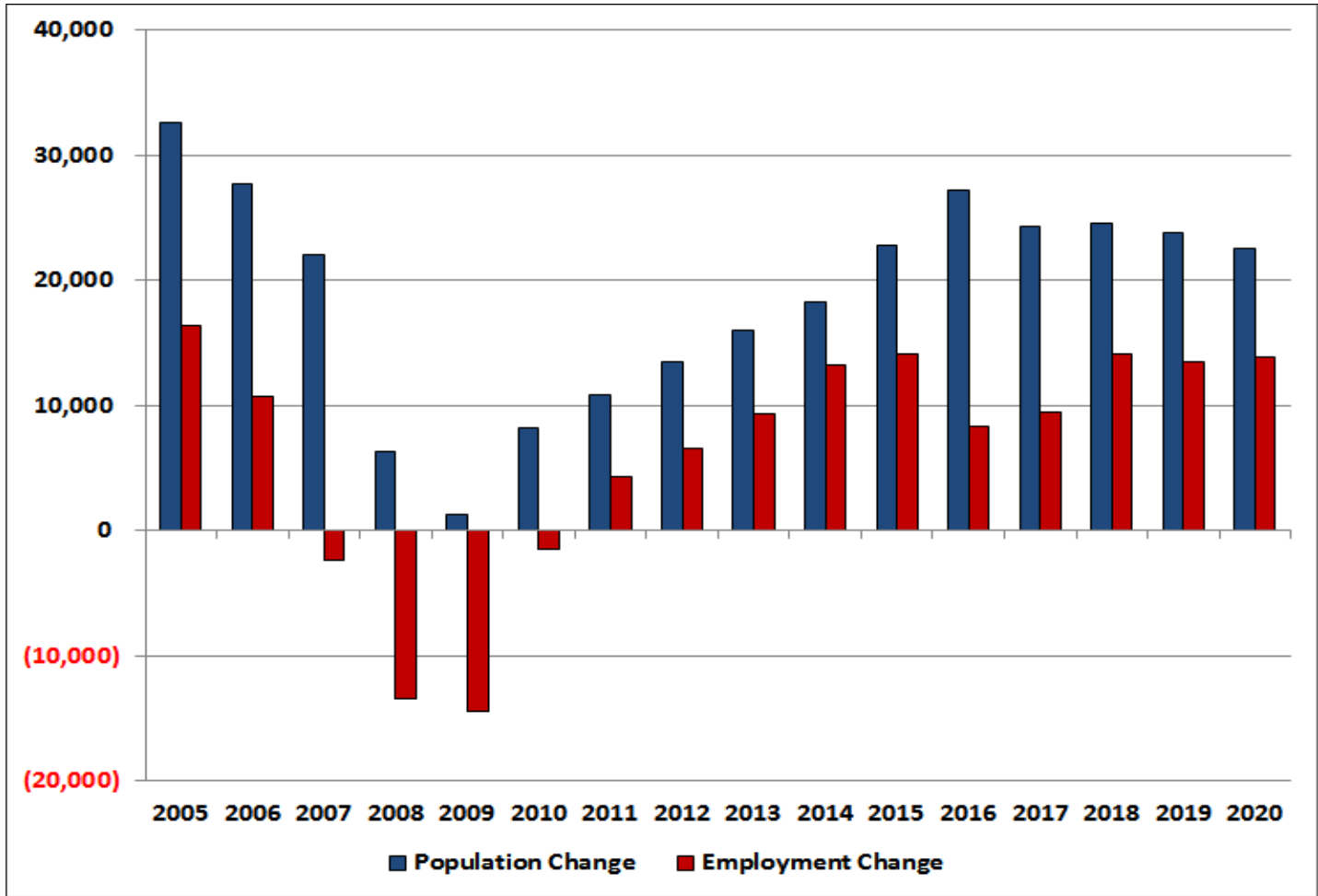


# Cape Coral-Ft. Myers MSA ECONOCAST

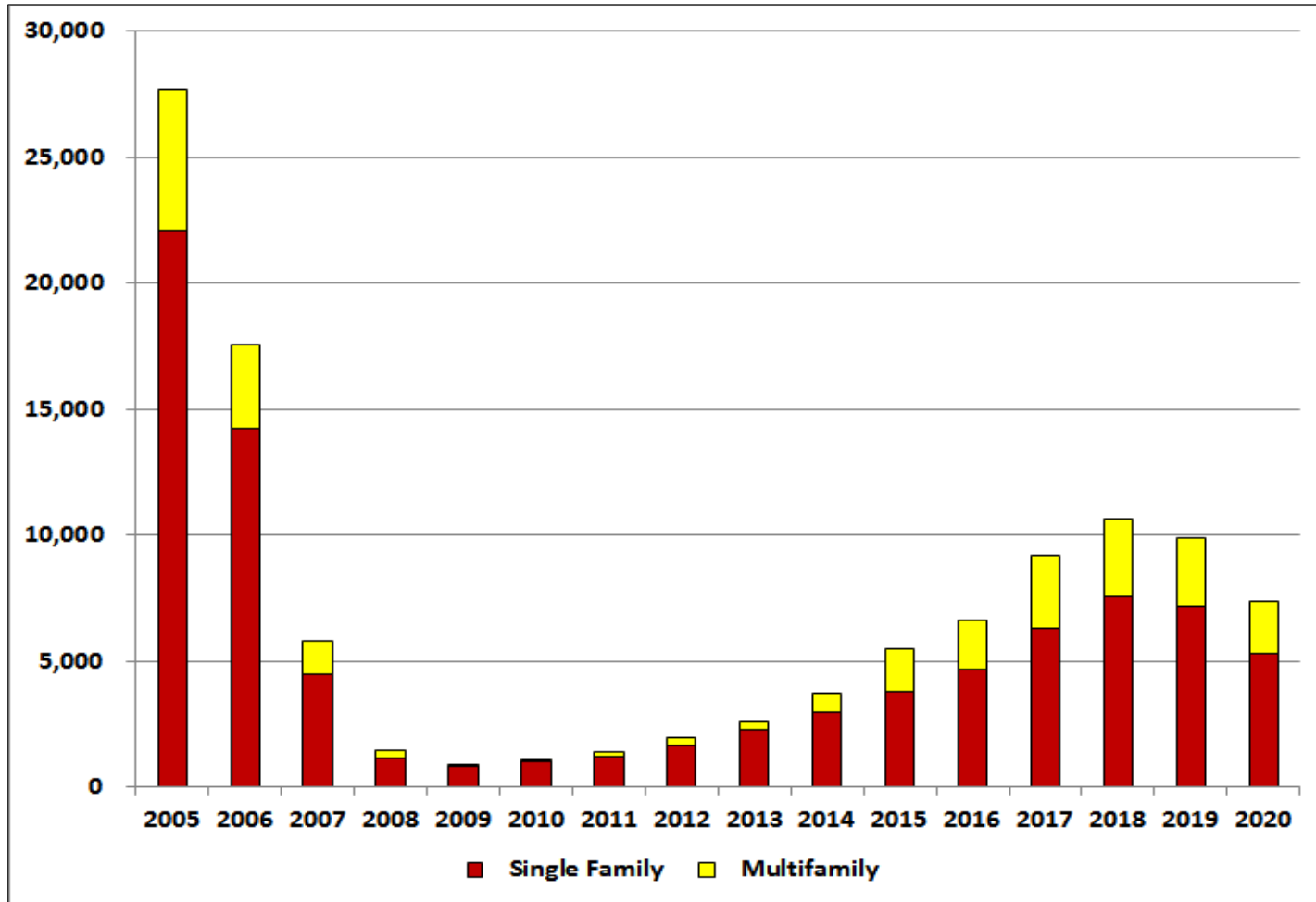
	<u>2014</u>	<u>2015</u>	<u>2016</u>	<u>2017</u>	<u>2018</u>	<u>2019</u>	<u>2020</u>
Population	679,233	701,982	729,175	753,432	778,048	801,906	824,393
Population Change	18,304	22,749	27,193	24,256	24,616	23,858	22,487
Employment	226,029	240,137	248,526	257,996	272,148	285,593	299,421
Employment Change	13,274	14,108	8,389	9,469	14,153	13,445	13,828
Per Capita Income	43,278	44,098	45,952	45,934	48,116	50,461	52,966
Unemployment Rate	6	5	5	4	5	5	6
Total Housing Starts	3,736	5,494	6,601	9,179	10,650	9,869	7,361
Single-Family	2,946	3,766	4,688	6,319	7,572	7,215	5,270
Multi-Family	790	1,728	1,913	2,860	3,077	2,654	2,090
New Single-Family Closings	1,802	1,758	2,566	4,210	4,708	4,771	4,703
New Single-Family Price	318,426	325,661	354,655	359,373	346,641	335,223	331,392
Existing Single-Family Closings	15,264	17,637	16,891	16,855	16,102	15,556	14,821
Existing Single-Family Price	243,286	269,542	284,853	261,421	265,258	267,532	275,060
New Condominium Closings	1,189	1,531	916	1,646	2,206	2,325	2,345
New Condominium Price	322,895	316,364	327,783	326,083	311,045	297,532	296,435
Existing Condominium Closings	7,068	8,495	7,421	6,838	6,398	6,274	5,962
Existing Condominium Price	211,036	205,977	213,610	196,879	204,723	206,460	211,802
Foreclosures	2,051	1,454	4,047	0	1,498	395	84
Commercial Construction (Sq. Ft.)	1,127,591	2,345,386	2,803,600	2,500,766	2,537,893	2,459,699	2,318,409
Local Retail	294,659	434,034	518,831	462,788	469,659	455,189	429,042
Regional Retail	187,592	452,120	540,450	482,072	489,229	474,156	446,919
Office	259,319	292,439	349,573	311,813	316,442	306,693	289,076
Industrial	0	80,320	96,012	85,641	86,912	84,234	79,396
Warehouse	88,579	482,851	577,184	514,839	522,483	506,385	477,297
Hotel	87,959	143,600	171,655	153,114	155,387	150,599	141,949
Hospital	0	0	0	0	0	0	0
Inst./Govt.	209,483	460,022	549,896	490,498	497,780	482,443	454,731

# Cape Coral-Ft. Myers MSA

## GROWTH IN POPULATION & EMPLOYMENT



# Cape Coral-Ft. Myers MSA HOUSING STARTS



# Cape Coral-Ft. Myers MSA COMMERCIAL CONSTRUCTION

