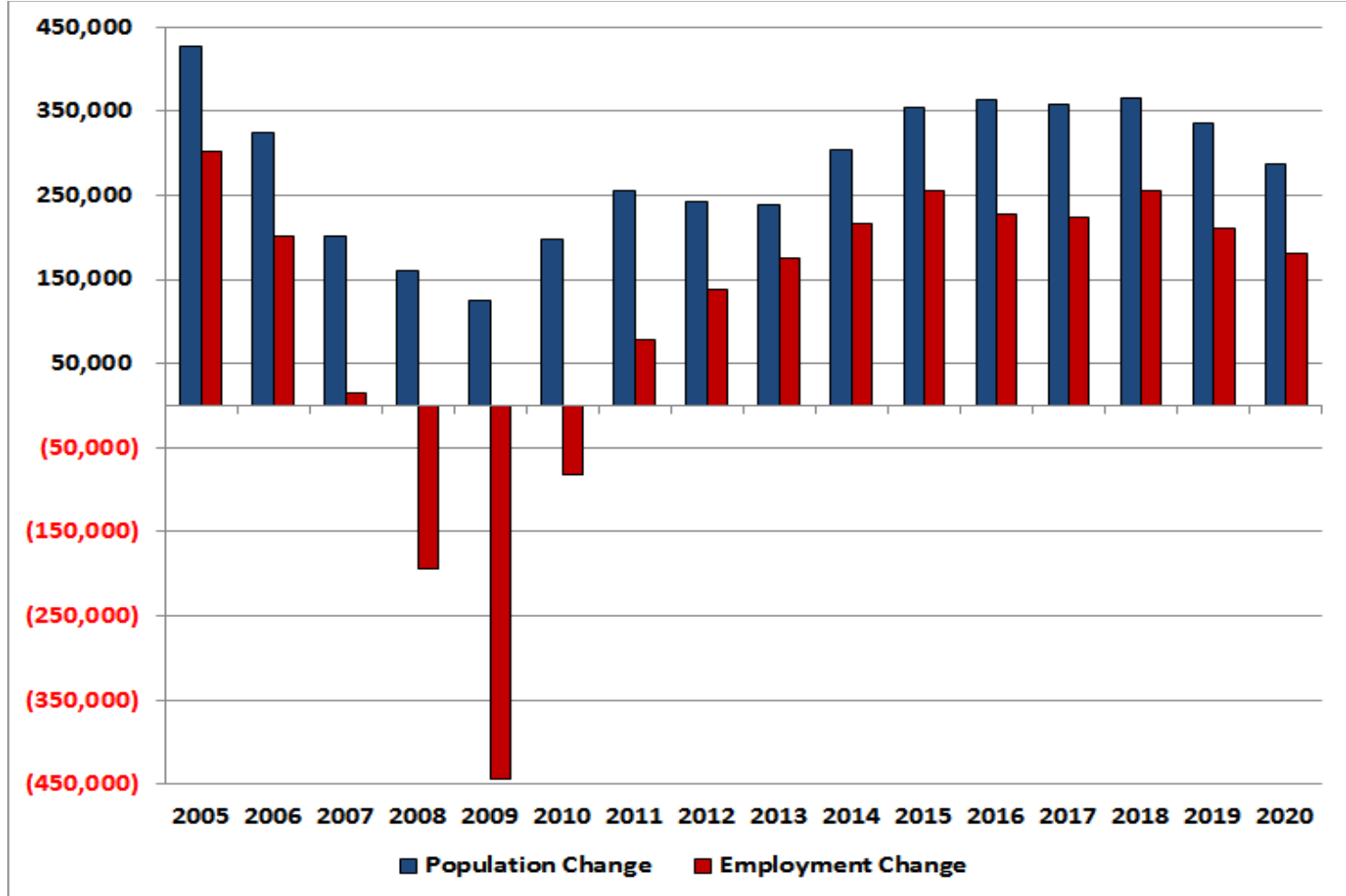


Florida ECONOCAST

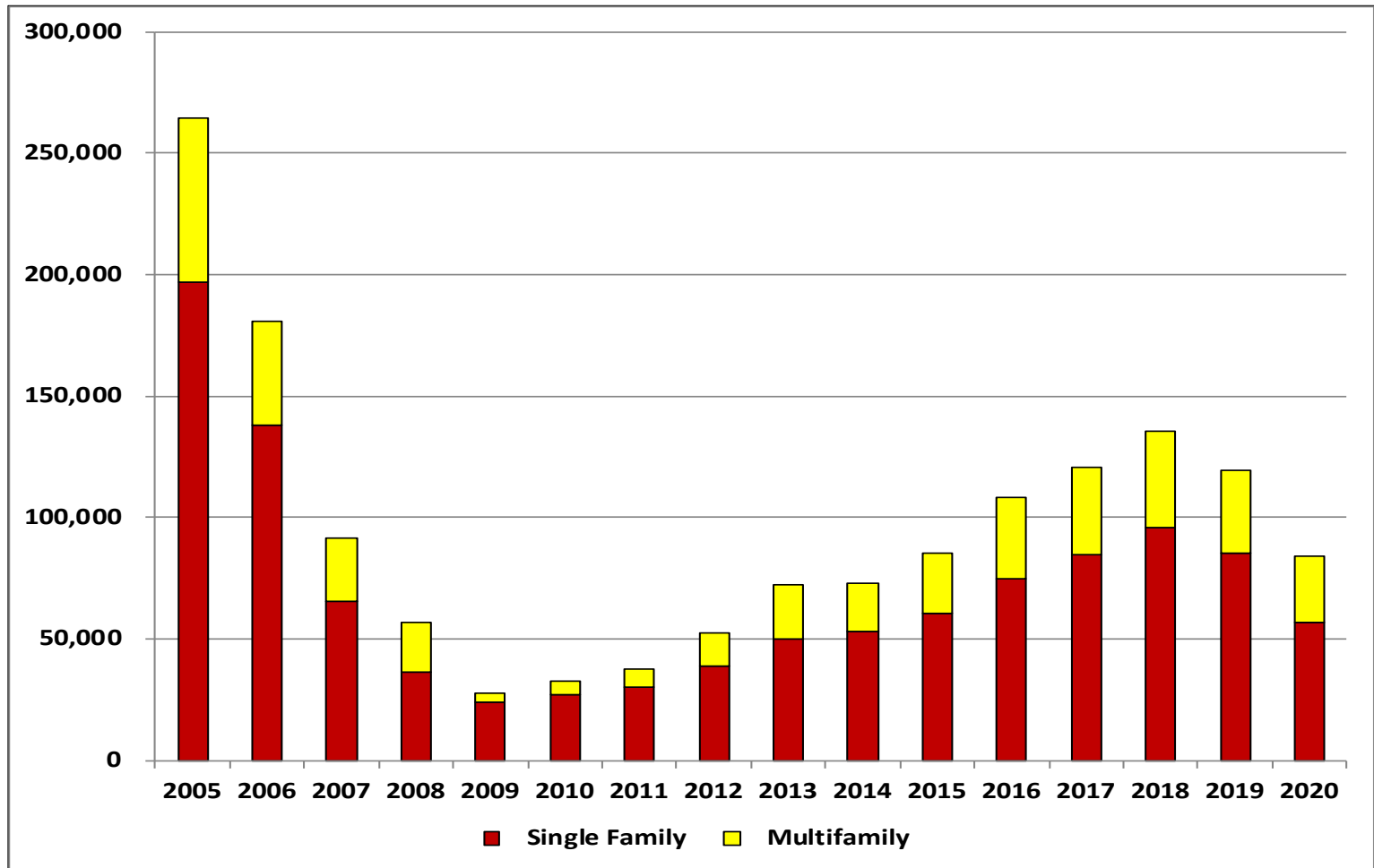
	<u>2014</u>	<u>2015</u>	<u>2016</u>	<u>2017</u>	<u>2018</u>	<u>2019</u>	<u>2020</u>
Population	19,890,079	20,244,245	20,607,588	20,965,054	21,330,153	21,665,147	21,952,268
Population Change	303,605	354,166	363,343	357,466	365,099	334,994	287,121
Employment	7,540,151	7,795,512	8,022,892	8,247,031	8,501,760	8,711,951	8,892,768
Employment Change	216,598	255,361	227,380	224,139	254,729	210,191	180,817
Per Capita Income	42,414	43,955	43,758	44,534	45,572	46,725	47,817
Unemployment Rate	6.3	5.4	4.3	4.0	4.0	5.3	7.0
Total Housing Starts	72,900	85,134	108,328	120,788	135,797	119,178	84,024
Single-Family	53,290	60,485	74,674	84,752	96,005	85,391	56,765
Multi-Family	19,610	24,649	33,654	36,037	39,791	33,787	27,260
New Single-Family Closings	33,550	41,174	47,653	72,619	88,780	100,516	103,825
New Single-Family Price	300,141	327,457	337,681	342,945	341,326	337,764	334,603
Existing Single-Family Closings	287,739	319,288	314,303	312,107	299,620	302,827	297,080
Existing Single-Family Price	243,690	254,531	268,032	255,141	255,484	254,411	256,901
New Condominium Closings	16,857	13,302	13,696	26,239	33,795	35,896	36,749
New Condominium Price	360,768	390,482	409,304	392,714	385,534	368,360	356,928
Existing Condominium Closings	125,929	137,506	130,610	120,062	112,239	110,040	106,237
Existing Condominium Price	219,366	224,156	225,332	222,389	226,571	224,799	227,123
Foreclosures	65,295	46,614	66,923	62,012	63,281	48,775	46,368
Commercial Construction (Sq. Ft.)	52,791,911	58,755,639	69,485,202	70,669,441	71,946,850	66,419,471	56,325,624
Local Retail	7,047,321	7,716,236	9,234,989	9,652,216	9,875,677	9,127,728	7,664,045
Regional Retail	10,785,666	7,495,676	9,067,276	8,872,646	9,047,995	8,336,696	7,028,765
Office	4,151,913	7,618,134	9,151,417	9,255,945	9,393,294	8,676,714	7,422,521
Industrial	3,736,060	3,268,702	3,995,161	4,399,274	4,376,237	4,064,217	3,407,724
Warehouse	10,309,328	11,296,523	13,593,353	13,525,725	14,017,164	12,820,139	10,859,858
Hotel	4,417,795	5,149,777	5,692,700	5,829,123	5,907,211	5,501,916	4,853,334
Hospital	1,454,346	324,612	446,064	353,357	415,830	365,752	311,126
Inst./Govt.	10,889,482	15,885,978	18,304,240	18,781,155	18,913,443	17,526,309	14,778,251

Florida

GROWTH IN POPULATION & EMPLOYMENT



Florida HOUSING STARTS



Florida COMMERCIAL CONSTRUCTION

